



INFORMATION

WORLD CHAMPIONSHIP SERIES

2015 GARLANDO



EUROPEAN CHAMPIONS LEAGUE

NEW TOURNAMENT VENUE :

TENNIS POINT VIENNA

**BAUMGASSE 87
1030 WIEN - AUSTRIA**

GARLANDO
WORLD CHAMPIONSHIP SERIES
& EUROPEAN CHAMPIONS LEAGUE

**10.-12.07.
2015**

**TENNIS POINT
VIENNA**

**BAUMGASSE 87
1030, WIEN**





REGISTRATION

REGISTRATION

The competitions are strictly reserved to ITSF licensees.

Players have to register **7 days at the latest before the event**

All players will be able to check their registration on the ITSF website: www.tablesoccer.org at least 7 days before the event.

The Pro, Semi Pro and Rookie Doubles competitions are exclusively open to those players ranked in those categories.

For Doubles events: a player may take part in a competition in a higher category than his/her own if his/her partner is ranked in that category.

Federations must ensure to select the correct category for their players in the online registration via Fast.

When sending their online registration, federations authorize the release of photograph, video or both, taken of their players during the event, to the TFBOE and ITSF.

The **deadline for European Champions League and TABLE PICKS** is:

FRIDAY, 26TH JUNE 2015 INCLUDED

No registration will be taken into account after this date.

The **deadline for all others categories registration** is:

FRIDAY, 3RD JULY 2015 INCLUDED

No registration will be taken into account after this date.

LICENSES

Players must have a player's license issued by their own federation to compete in ITSF events. – they can have one only. Please contact your federation for details.

Registration and payment must be done by your federation through FAST software only.

Bank transfer must be done to TFBOE (Tischfussballbund Österreich):

ACCOUNT ID

**International Bank Account Number :
Bank Austria Creditanstalt
AT 9612 0001 0002 047 909**

**Code swift :
BKAUATWW**



ENTRY FEES

PACKAGE CONTENT

| REGISTRATION FEE (tournament fee included) | | TOURNAMENT FEE | REGISTRATION PER EVENT |
|---|-----------------|-------------------|--|
| Pro | € 130 | € 30 | Pro € 50 |
| Semi-pro | € 110 | € 30 | Semi-pro € 40 |
| Rookie | € 90 | € 30 | Rookie € 30 |
| Junior | € 30 - pro: €90 | € 30 | Women € 30 |
| Senior | as ranked | € 30 | + Tournament fee € 30 |
| Women | € 90 | € 30 | Old School Double (OSD) or 2 Roller Balls |
| Disabled | Free | Free | € 10 |

Pro, Semi-Pro and Rookie packages include:

- Singles event (Open or Women or Junior or Senior)
- Doubles event (Open or Women or Junior or Senior)
- 1 Doubles event per rating category (P, SP, R)
- Mixed doubles

Women, Junior and Senior must choose to play in their category (WS, WD, JS, JD, SS, SD) or open events (OS, OD). ONLY If less than 8 players in their category, they can play in both events exceptionnaly. In that case, No qualification for WS, WD, JS, JD, SS, SD. Format = SKO 3/5.

RATING CATEGORIES

Pro = Top 150 players from ITSF Open Combined Ranking and Pro in Garlando Ranking

Semi-Pro = Players ranked 151 to 400 in ITSF ranking + Semi-Pro in Garlando Ranking

Rookie = All others players + Rookie in Garlando Ranking.

Non-Austrian Players without classification will be classified as Semi-Pro

Players will plays exclusively with TST handles which will be available on site. Click **HERE** for rental details.

REFEREE & DRESS CODE

The tournament fee includes 5€ for the Referee fees. Referee receive payment based on their level and number of matches officiated. This fee does not guarantee a referee for all matches. There is no referring during qualification rounds. In elimination, if no referee after 10 minutes, the match must start. All Referees must wear ITSF referee shirt displaying their referee level. An official clinic will be held during the event (TBD). Click **HERE** for more details

Sport Dress is compulsory for ALL players during the competition including ceremonies. (Please refer to ITSF Dress Code **HERE** for details). Teams must wear their national club outfit during the Champions league competition and and opening ceremony.



SCHEDULE AND MATCH FORMAT

FRIDAY 10 JULY

| Competitions | Qualification (1) | Seeded Players & Protected teams | Nb of Q matches (2) | Qualified players/team | Elimination start | Elimination format | Finals (estimated) |
|---|----------------------|----------------------------------|---------------------|------------------------|--|--------------------|--------------------|
| Doubles event per category (Pro, Semi Pro, Rookie) | 9.00 AM to 12.30 PM | NA | 6 | 80% (3) | 1.30 PM | SKO - 3/5 | over 2 days |
| Mixed Doubles | - | - | - | - | 12.30 PM | SKO - 3/5 | over 2 days |
| Old Schools Double (OSD) for eliminated players | NA | NA | NA | NA | 4.30 PM 3.30 PM for registration deadline | DKO - 2/3 - 7 | 10.00 PM |
| 4.00 PM to 4.30 PM : Opening Ceremony (Stop calling match at 3.30 PM) | | | | | | | |
| European Champions League | 4.30 PM (See page 6) | (4) | 3 | 12 (6W) | - | See page 5 & 6 | over 2 days |
| Last match call 11.00 PM | | | | | | | |

SATURDAY 11 JULY

| | | | | | | | |
|--|---------------------|-------------------|-----------|---------|--|----------------|-------------|
| Open Doubles | 9.00 AM to 12.30 PM | (See Table below) | 6 minimum | 80% (3) | 1.30 PM | SKO - 3/5 | over 2 days |
| Women, Junior and Senior Doubles | 9.00 AM to 12.30 PM | (See Table below) | 6 minimum | 100% | 1.30 PM | SKO - 3/5 | 6.00 PM |
| 2 Roller Ball for eliminated players | NA | NA | NA | NA | 5.00 PM 4.00 PM Registration deadline | DKO - 2/3 - 7 | 10.30 PM |
| European Champions League | - | - | - | - | 12.30 PM (1/2 finals) | See page 5 & 6 | 7.00 PM |
| 8.30 PM : Award Ceremony (Last match start at 8.00 PM) | | | | | | | |
| Last match call 11.00 PM | | | | | | | |

SUNDAY 12 JULY

| | | | | | | | |
|--|---------------------|----------------------|-----------------|--------------------------|---------|-----------|---------|
| Open, Women, Junior and Senior Singles | 9.00 AM to 12.30 PM | 12 (See Table below) | 8 (6 for W/J/S) | 80% (100% for W/J/S) (3) | 1.00 PM | SKO - 3/5 | 8.00 PM |
| 2.00 PM : Award Ceremony for doubles event . Singles events : award to be presented at the end of each competition | | | | | | | |

1/ All qualification matches are played on a single 7 points game. (Except European Champions League - See page 5 and 6).

2/ The Number of qualification matches depends on the number of players/teams and tables to make sure elimination starts on time.

3/ 80% of qualified players BUT the maximum number cannot be more than 4 times the number of available tables for the final rounds. Players must take part of 50% of their qualification matches to be qualified for the Elimination rounds

4/ The number of protected teams is based on the ITSF World Nation Ranking and depends on the number of registered teams. Protected play in qualification but do not meet others each others. Non-protected teams do not meet more than 1 protected team.

SEEDED PLAYERS

All top seeded players are determined using the ranking set 4 weeks before the start of the competition.

- Men : There shall be 8 Top Seeds (TS) according to the ITSF World Ranking + 4 Top Seeds determined by the host federation (= wild cards). These 12 Top Seeds do not play qualification matches. In the Doubles event, points from both partners are added for the seeding.

- Women : If >32 players, 4 top seeds according to ITSF world women ranking + 2 top seed determined by the host federation. If <32 players, 4 top seeds according to ITSF world women ranking.



PRIZES

OPEN

+ ITSF medal for Top 3

| | Singles | Doubles |
|-------|---|---------------------------------|
| 1 | 1000 € +Masters Qualification* +WCh package** | 2000 € +WCh Qualification*** |
| 2 | 650 € +WCh package** | 1400 € +WCh Qualification*** |
| 3 | 400 € +WCh package** | 900 € +WCh Qualification*** |
| 4 | 300 € | 600 € |
| 5/8 | 200 € | 400 € |
| 9/16 | 125 € | 220 € |
| 17/32 | 80 € if + 250 players | 140 € if + 150 teams |

WOMEN

+ ITSF Medals for top 3

| | Singles | Doubles |
|-----|--|--------------------------------|
| 1 | 350 € +Masters Qualification* +WCh package** | 550 € +WCh Qualification*** |
| 2 | 250 € | 350 € |
| 3 | 150 € | 220 € |
| 4 | 150 € | 220 € |
| 5/8 | 100 € if + 32 players | 150 € if + 20 teams |

SENIOR

+ ITSF Medals for top 3

| | Singles | Doubles |
|---|-------------------------|--------------------------------|
| 1 | 200 € +WCh package** | 300 € +WCh Qualification*** |
| 2 | 150 € | 200 € |
| 3 | 70 € | 100 € |
| 4 | 70 € | 100 € |

JUNIOR AND DISABLED

+ ITSF Medals for top 3

| | Singles | Doubles |
|---|--------------------------|---------------------------------|
| 1 | Trophy +WCh package** | Trophy +WCh Qualification*** |
| 2 | Trophy | Trophy |
| 3 | Trophy | Trophy |

PRO Doubles

| | |
|-----|-------|
| 1 | 400 € |
| 2 | 250 € |
| 3 | 100 € |
| 4 | 100 € |
| 5/8 | 80 € |

SEMI PRO Doubles

| | |
|-----|-------|
| 1 | 300 € |
| 2 | 200 € |
| 3 | 100 € |
| 4 | 100 € |
| 5/8 | 50 € |

MIXED Doubles

| | |
|---|-------|
| 1 | 300 € |
| 2 | 200 € |
| 3 | 100 € |
| 4 | 100 € |

ROOKIE Doubles

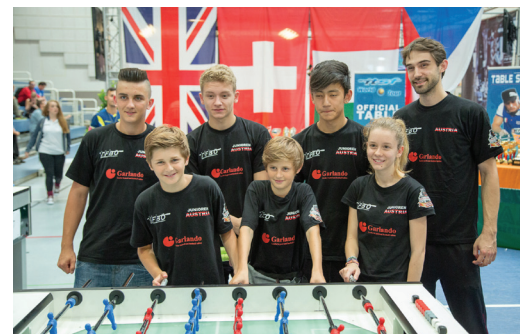
| | |
|---|-------|
| 1 | 200 € |
| 2 | 150 € |
| 3 | 80 € |
| 4 | 80 € |

OSD OR 2 ROLLER BALL

| | |
|---|-------|
| 1 | 200 € |
| 2 | 150 € |
| 3 | 70 € |
| 4 | 70 € |

* These players are automatically qualified for the **2016 ITSF Masters**.
Click **HERE** for all qualification details.

These players are automatically qualified for the **2017 ITSF World Championships and will get a travel package. ***These players are automatically qualified for the **2017 ITSF World Championships**.
Click **HERE** for all qualification details.





RULES

Article 1 : Regular member federations can send teams to participate in the ECL 2015. Participating teams are winners from the 2014 season or 2013/2014 season (depending on whether a federation's season is aligned with the calendar year or academic year) Associate member federations can send teams to participate in the ECL 2015 only after approval by the ITSF federation assessment commission.

Men : ONLY ITSF Regular member which have 2 divisions or at least 12 teams in their leagues can benefit from a wild Card.

Women : ONLY ITSF Regular member can benefit from a wild card.

Article 2 : "1 player, 1 club" Players cannot represent a club in the ECL if they have played for any other club during the whole ITSF season (January 1st to Dec. 31st, 2015) in a national league in one of the participating countries with a public national league*. It is the responsibility of national federations to monitor this and to provide the list of their national leagues to ITSF.

*The expression "having a public national league" means that a national federation has for minimum one national-level league (men or women or mixed) able to qualify for the European Champions League. Information about ranking and participating players will have to be published by each federation on the internet.

Article 3 : Only players member of a National Federation, or players with at least one year's residence in that country, having a public national league, can play the European Champions League.

If you are a male player and you want to play ECL in 2015, these are the 2 requirements:

1. Your national federation, or the country where your residence have been for more than one year, is organizing a public national league in 2015.
2. You are not allowed to play for any other club during the whole ITSF season (January 1st to Dec. 31st, 2015) in a national league in one of the countries with a public national league.

If you are a female player and you want to play women ECL in 2015, these are the 2 requirements:

1. Your national federation, or the country where your residence have been for more than one year, is organizing a public national league in 2015.(not necessary a women one).
2. You are not allowed to play for any other club during the whole ITSF season (January 1st to Dec. 31st, 2015) in a national women league in one of the countries with a public national league.

Article 4 : The decision if players (who are not playing ECL) are allowed to play in different national leagues is under the responsibility of each single national federation.

Please note that **each National Federation must determine if their players are allowed to have 2 different licences or not.** The list of national public leagues will be available on the [ITSF European confederation website](http://www.itsf-europe.com).



MATCH FORMAT

- **Men:** 6 + 3 reserve players (minimum 5 players to make up a team)
- **Women:** 4 + 2 reserve players (minimum 3 players to make up a team) NB : If a country is sending a women team, they cannot have women in a men team.

- Each national team chooses 1 table, and only one, for the whole tournament - teams from the same country can choose different tables:

BONZINI



GARLANDO



LEONHART



ROBERTO SPORT



TORNADO



MEN

D-D-S-S-D-D (12 games - 1 point per game)
 1 game first to 5 on each table - 2 points difference (Up to 8 maximum)
 1 time out per game and per team (If overtime 4-4 or more, 1 extra time out per team)
 Possible tie 6-6 in Qualification (See page 6 -"Qualification round" for ranking system)
 OR Penalty in Elimination (See page 6 for Penalty Rules)

WOMEN

D-D-S-S-D (10 Games - 1 point per game)
 1 game first to 5 on each table - 2 points difference (Up to 8 maximum)
 1 time out per game and per team (If overtime 4-4 or more, 1 extra time out per team)
 Possible tie 5-5 in Qualification (See page 6 "Qualification round" for ranking system)
 OR Penalty in Elimination (See page 6 for Penalty Rules)

• In the **MEN'S EVENT**, 4 players will play 2 matches and 2 players will play 1 match, so there must always be 6 different names on each scoresheet. The first 2 Doubles matches (D1 & D2) and the first 2 Singles matches (S1 & S2) must be played by 6 different players.

• In the **WOMEN EVENTS**, players play 2 matches; so there must always be 4 names on each scoresheet. The 1st Doubles matches (D1 & D2) must be played by 4 different players. Singles matches (S1 & S2) must be played by 2 different players.

IMPORTANT : In Qualification, 2 matches takes place at the same time (See page 6 for details) In Elimination : Matches are played one at a time, EXCEPT if delay has accumulated : 2 matches will take place at the same time. (See page 6 for the coin flip rule and details)



QUALIFICATION ROUND

Each Team meets 3 others teams at random (Draw managed by FAST). 12 teams qualified for next round (6 in Women).

A match consists of 1 game first to 5 goals on each tables - 2 points difference (Up to 8 goals maximum)

• At the end of the match - 12 games (10 in the women events), points will be granted according to the number of games won by each team:

- when a team has won more than 6 games (5 in Women), it is granted 2 points
- when a team has won 6 games (5 in Women), it is granted 1 point
- when a team has won less than 6 games (5 in Women), it is granted 0 point

Specific cases :

- if 2 teams have scored the same number of points, the team that has won the most games comes first ;
- if both teams have won an equal number of games, the team that has the higher goal average comes first ;
- if both teams have the same goal average, the team that has scored the most goals is first.

SPECIFIC CASES

Specific cases linked to the number of players in a team.
The score of a forfeited match = 5-2

Men events :

5 vs 6 : D1 is forfeited
5 vs 5 : S1 is not played

Women events :

4 vs 3 : D1 is forfeited
3 vs 3 : D1 is not played

Men :

5 vs 6 : D2, S1 and S2 must be played by 4 different players if you have 5 players only
5 vs 5: D1, D2 and S2 must be played by 5 different players; penalties at 5-5 in elimination

Women :

4 vs 3: D2 and S1 must be played by 3 different players if you have 3 players only
3 vs 3: D2 and S1 must be played by 3 different players; penalties at 4-4 in elimination.



COIN FLIP RULES

2 matches take place at the same time:

When 2 teams meet, they have 2 tables at their disposal. The team captains flip a coin TWICE :

- 1/ the team who wins the first flip chooses the side of the table they will play on for ALL the matches against the other team; they must play on the same side on both tables.
- 2/ Each Team will get the serve on its home table. The team who wins the second flip will choose which table is played first.

IMPORTANT : Teams must not wait for their players to be available for the next match.

- If 2 matches end exactly at the same time, there is one flip to decide which table is played first.

PENALTY RULES

When a match is tied at the end of regulation games, an Overtime Shootout will take place.

- Each team will submit a roster of 5 players who will take and defend shots against players from the opponent's roster in the order they were submitted.
- Each player will take a shot on his home table against the corresponding player listed on the opponents roster (player 1vs1, 2vs2, etc).

A team receives a point when a player scores a goal. The team with the most points after 5 rounds wins the match.

If teams are still tied after the first 5 shooters, the Overtime goes into Sudden Death where players again take shots in the original order. The first team to score a goal and successfully block the opposing shooter will win the match.

• **Coin toss:** The team who wins the coin toss will choose to either shoot first or defend. The team who loses the coin toss has the remaining option. This order will continue for the subsequent rounds of the Overtime Shootout.

• **Time:** Both players have 30 seconds to begin the Overtime Shootout. Normal time limits and rules are in effect but time outs are not allowed. A time violation will be considered a blocked shot when charged to the shooter or a scored goal when delay of game is charged to the goalie.

• **Handles:** Only the forward handles (3-rod) may be changed before or after shots during the Overtime Shootout.



ACCOMMODATION

HOTEL MEININGER WIEN HAUPTBAHNHOF

Click [HERE](#) to visit the website

A-1100 Wien, Columbusgasse 16 – Tel +43 (0) 720 88 20
Distance to venue: 2,7 km



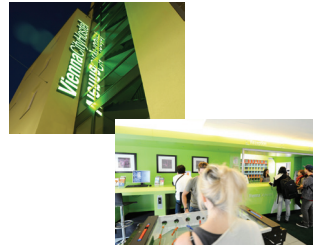
| | |
|-----------|---------------------|
| Single | 52,00 Euro / person |
| Doubles | 25,00 Euro / person |
| 3-persons | 20,00 Euro / person |
| 4-persons | 18,00 Euro / person |
| 6-persons | 12,00 Euro / person |
| Breakfast | 6,90 Euro / Person |

USE THE CODE **"TFBOE"** TO BENEFICIATE FROM THE OFFER !

VIENNA CITY HOSTEL

Click [HERE](#) to visit the website

A-1100 Wien, Dampfgasse 8 – Tel +43 (0) 505 88 43
Distance to venue: 2,9 km



| | |
|-----------------|---------------------|
| 4-persons | 23,75 Euro / person |
| 6-persons | 20,90 Euro / person |
| Excl. breakfast | |

A&O WIEN HAUPTBAHNHOF

Click [HERE](#) to visit the website

A-1100 Wien, Sonnwendgasse 11 Tel +43 (0) 602 061 738 01
Distance to venue: 2,3km
2-persons 69,75 Euro / room
Excl. breakfast



DELTA HOTEL VIENNA

Click [HERE](#) to visit the website

A-1100 Wien, Sonnwendgasse 8 – Tel +43 (0) 120 609 1440
Distance to venue: 2,3km
2-persons 69,00 Euro / room
Excl. breakfast



CONTACT



TISCHFUSSBALLBUND ÖSTERREICH

✉ : **TISCHFUSSBALLBUND ÖSTERREICH**

Albrechtsberggasse 35/8
A-1120 Wien
AUSTRIA

☎ : +43 676 360 3550

@: info@tfboe.org

💻 : www.tfboe.org



international table soccer federation

✉ : **INTERNATIONAL TABLE SOCCER FEDERATION**

3 rue Clermont
44000 Nantes
FRANCE

☎ : +33 (0)2 40 47 90 84

☎ : +33 (0)2 40 20 44 59

@: info@tablesoccer.org

💻 : www.tablesoccer.org

