



INFORMATION

WORLD CHAMPIONSHIP SERIES

2015 BONZINI

BABYFOOT BABYFOOT

CHAMPIONNATS DU MONDE

★ ★ ★ ★ *BONZINI* ★ ★ ★ ★

DU 8 AU 10 MAI 2015

BEAUVAIS - ELISPACE

TABLES EN LIBRE ACCÈS ET ENTRÉE GRATUITE

WWW.FRANCEBABYFOOT.COM





REGISTRATION

REGISTRATION

The competitions are strictly reserved to ITSF licensees.

Players have to register **7 days at the latest before the event**

All players will be able to check their registration on the ITSF website: www.tablesoccer.org at least 7 days before the event.

The Pro, Semi Pro and Rookie Doubles competitions are exclusively open to those players ranked in those categories.

For Doubles events: a player may take part in a competition in a higher category than his/her own if his/her partner is ranked in that category.

Federations must ensure to select the correct category for their players in the online registration via Fast.

When sending their online registration, federations authorize the release of photograph, video or both, taken of their players during the event, to the FFFT and ITSF.

The **deadline for National team registration and TABLE PICKS** is:

FRIDAY, 24TH APRIL 2015 INCLUDED

No registration will be taken into account after this date.

The **deadline for all others categories registration** is:

FRIDAY, 1ST MAY 2015 INCLUDED

No registration will be taken into account after this date.

NB : Players can register in advance for friday DYP via FAST Software

LICENSES

Players must have a player's license issued by their own federation to compete in ITSF events. – they can have one only. Please contact your federation for details.

Registration and payment must be done by your federation through FAST software only.

Bank transfer must be done to FFFT (Federation Française de Football de Table):

ACCOUNT ID

International Bank Account Number :
FR76 1470 6000 4132 5822 0500 065

Code swift :
AGRIFRPP847



ENTRY FEES

PACKAGE CONTENT

REGISTRATION FEE (tournament fee included)		TOURNAMENT FEE	REGISTRATION PER EVENT	
Pro	€ 130	€ 30	Pro	€ 50
Semi-pro	€ 110	€ 30	Semi-pro	€ 40
Rookie	€ 90	€ 30	Rookie	€ 30
Junior	€ 30 - pro: €90	€ 30	Women	€ 30
Senior	as ranked	€ 30	+ Tournament fee	€ 30
Women	€ 90	€ 30	DAILY DYP	
Disabled	Free	Free	€ 10	

Pro, Semi-Pro and Rookie packages include:

- Singles event (Open or Women or Junior or Senior)
- Doubles event (Open or Women or Junior or Senior)
- 1 Doubles event per rating category (P, SP, R)
- Mixed doubles

Women, Junior and Senior must choose to play in their category (WS, WD, JS, JD, SS, SD) or open events (OS, OD). ONLY If less than 8 players in their category, they can play in both events exceptionnaly. In that case, no qualification for WS, WD, JS, JD, SS, SD. Format = SKO 3/5.

RATING CATEGORIES

Pro = Top 150 players from ITSF Open Combined Ranking and Pro/Pro Elite players in FFFt Ranking

Semi-Pro = Players ranked 151 to 400 in ITSF ranking + A and B series in the FFFT ranking

Rookie = All others players + C series in the FFFT rankings (French players). No-pro women players can choose to play in the Rookie categories.

Players will plays exclusively with TST handles or Bonzini. Click [HERE](#) for rental details.

REFEREE & DRESS CODE

The tournament fee includes 5€ for the Referee fees. Referee receive payment based on their level and number of matches officiated.

This fee does not guarantee a referee for all matches. There is no referring during qualification rounds. In elimination, if no referee after 10 minutes, the match must start. All Referees must wear ITSF referee shirt displaying their referee level.

An official clinic will be held on Saturday, May 9th at 9 PM. Click [HERE](#) for more details

Sport Dress is compulsory for ALL players during the competition including ceremonies. (Please refer to ITSF Dress Code [HERE](#) for details).

National teams must wear their national outfit during the national competition and opening ceremony.



SCHEDULE AND MATCH FORMAT

FRIDAY 8 MAY

Competitions	Qualification (1)	Seeded Players & Protected teams	Nb of Q matches (2)	Qualified players/team	Elimination start	Elimination format	Finals (estimated)
Doubles event per category (Pro, Semi Pro, Rookie)	9.00 AM to 12.30 PM	NA	6	80% (3)	1.30 PM	SKO - 3/5	over 2 days
Mixed Doubles	-	-	-	-	12.30 PM	SKO - 3/5	over 2 days
DYP for non national team members	NA	NA	NA	NA	4.30 PM 3.30 PM for registration deadline	DKO - 2/3 - 7	10.00 PM
4.00 PM to 4.30 PM : Opening Ceremony (Stop calling match at 3.30 PM)							
Multitable National Team event	4.30 PM (See page 5)	(4)	3	12 (6W- 4J/S)	-	See page 4 & 5	over 2 days
Last match call 11.00 PM							

SATURDAY 9 MAY

Open Doubles	9.00 AM to 12.30 PM	(See Table below)	6 minimum	80% (3)	1.30 PM	SKO - 3/5	over 2 days
Women, Junior and Senior Doubles	9.00 AM to 12.30 PM	(See Table below)	6 minimum	100%	1.30 PM	SKO - 3/5	6.00 PM
DYP for eliminated players	NA	NA	NA	NA	5.00 PM 4.00 PM Registration deadline	DKO - 2/3 - 7	10.30 PM
Multitable National Team event	-	-	-	-	12.30 PM (1/2 finals)	See page 4 & 5	7.00 PM
8.30 PM : Award Ceremony (Last match start at 8.00 PM) + Official clinic at 9PM							
Last match call 11.00 PM							

SUNDAY 10 MAY

Open, Women, Junior and Senior Singles	9.00 AM to 12.30 PM	12 (See table below)	8 (6 for W/J/S)	80% (100% for W/J/S) (3)	1.00 PM	SKO - 3/5	8.00 PM
2.00 PM : Award Ceremony for doubles event . Singles events : award to be presented at the end of each competition							

1/ All qualification matches are played on a single 7 points game. (Except national teams competition - See page 5).

2/ The Number of qualification matches depends on the number of players/teams and tables to make sure elimination starts on time.

3/ 80% of qualified players BUT the maximum number cannot be more than 4 times the number of available tables for the final rounds. Players must take part of 50% of their qualification matches to be qualified for the Elimination rounds

4/ The number of protected teams is based on the ITSF World Nation Ranking and depends on the number of registered teams. Protected teams play in qualification but don't meet each others. Non-protected teams don't meet more than 1 protected team.

SEEDED PLAYERS

All top seeded players are determined using the ranking set 4 weeks before the start of the competition.

- Men : There shall be 8 Top Seeds (TS) according to the ITSF World Ranking + 4 Top Seeds determined by the host federation (= wild cards). These 12 Top Seeds don't play qualification matches. In the Doubles event, points from both partners are added for the seeding.

- Women : If >32 players, 4 top seeds according to ITSF world women ranking + 2 top seed determined by the host federation. If <32 players, 4 top seeds according to ITSF world women ranking.



PRIZES

OPEN

+ ITSF medal for Top 3

	Singles	Doubles
1	1000 € +Masters Qualification* +WCh package**	2000 € +WCh Qualification***
2	650 € +WCh package**	1400 € +WCh Qualification***
3	400 € +WCh package**	900 € +WCh Qualification***
4	300 €	600 €
5/8	200 €	400 €
9/16	125 €	220 €
17/32	80 € if + 250 players	140 € if + 150 teams

WOMEN

+ ITSF Medals for top 3

	Singles	Doubles
1	350 € +Masters Qualification* +WCh package**	550 € +WCh Qualification***
2	250 €	350 €
3	150 €	220 €
4	150 €	220 €
5/8	100 € if + 32 players	150 € if + 20 teams

SENIOR

+ ITSF Medals for top 3

	Singles	Doubles
1	200 € +WCh package**	300 € +WCh Qualification***
2	150 €	200 €
3	70 €	100 €
4	70 €	100 €

JUNIOR AND DISABLED

+ ITSF Medals for top 3

	Singles	Doubles
1	Trophy +WCh package**	Trophy +WCh Qualification***
2	Trophy	Trophy
3	Trophy	Trophy

PRO

Doubles

1	400 €
2	250 €
3	100 €
4	100 €
5/8	80 €

SEMI PRO

Doubles

1	300 €
2	200 €
3	100 €
4	100 €
5/8	50 €

MIXED

Doubles

1	300 €
2	200 €
3	100 €
4	100 €

ROOKIE

Doubles

1	200 €
2	150 €
3	80 €
4	80 €

DYP

1	200 €
2	150 €
3	70 €
4	70 €

* These players are automatically qualified for the 2016 ITSF Masters.

Click [HERE](#) for all qualification details.

These players are automatically qualified for the 2017 ITSF World Championships and will get a travel package. *These players are automatically qualified for the 2017 ITSF World Championships.

Click [HERE](#) for all qualification details.



NATIONAL TEAM COMPETITIONS

MULTITABLE NATIONAL TEAM EVENTS

- **Men:** 6 + 3 reserve players (minimum 5 players to make up a team)
- **Women, Junior & Senior:** 4 + 2 reserve players (minimum 3 players to make up a team) NB : If a country is sending a women team, they cannot have women in a men team. Junior = 18 and under, players born in 1997 or after. Senior = 50 and over, born in 1965 and before. Male and/or female players can be part of Junior or Senior teams.

- Each national team chooses 1 table, and only one, for the whole tournament - teams from the same country can choose different tables:

BONZINI GARLANDO LEONHART ROBERTO SPORT TORNADO



MATCH FORMAT

MEN

D-D-S-S-D-D (12 games - 1 point per game)
 1 game first to 5 on each table - 2 points difference (Up to 8 maximum)
 1 time out per game and per team (If overtime 4-4 or more, 1 extra time out per team)
 Possible tie 6-6 in Qualification (See page 5 for ranking system)
 OR Penalty in Elimination (See page 5 for Penalty Rules)

WOMEN, JUNIOR and SENIOR

D-D-S-S-D (10 Games - 1 point per game)
 1 game first to 5 on each table - 2 points difference (Up to 8 maximum)
 1 time out per game and per team (If overtime 4-4 or more, 1 extra time out per team)
 Possible tie 5-5 in Qualification (See page 5 for ranking system)
 OR Penalty in Elimination (See page 5 for Penalty Rules)

- In **MEN EVENTS**, 4 players will play 2 matches and 2 players will play 1 match, so there must always be 6 different names on each scoresheet. The first 2 Doubles matches (D1 & D2) and the first 2 Singles matches (S1 & S2) must be played by 6 different players.

- In **WOMEN, JUNIOR AND SENIOR EVENTS**, players play 2 matches; so there must always be 4 names on each scoresheet. The 1st Doubles matches (D1 & D2) must be played by 4 different players. Singles matches (S1 & S2) must be played by 2 different players.

IMPORTANT: In Qualification and Elimination, 2 matches takes place at the same time (See page 5 for details).



NATIONAL TEAM COMPETITIONS

QUALIFICATION ROUND

Each team meets 3 others teams at random (Draw managed by FAST). 4 teams qualified for next round in Men, Women, Junior and Senior.

A match consists of 1 game first to 5 goals on each tables - 2 points difference (Up to 8 goals maximum)

• At the end of the match - 12 games (10 in the Women, Junior and Senior), points will be granted according to the number of games won by each team:

- when a team has won more than 6 games (5 in Women, Junior and Senior), it is granted 2 points
- when a team has won 6 games (5 in Women, Junior and Senior), it is granted 1 point
- when a team has won less than 6 games (5 in Women, Junior and Senior), it is granted 0 point

Specific cases :

- if 2 teams have scored the same number of points, the team that has won the most games comes first ;
- if both teams have won an equal number of games, the team that has the higher goal average comes first ;
- if both teams have the same goal average, the team that has scored the most goals is first.

SPECIFIC CASES

Specific cases linked to the number of players in a team.

The score of a forfeited match = 5-2

Men events :

- 5 vs 6 : D1 is forfeited
- 5 vs 5 : S1 is not played

Women, Junior and Senior events :

- 4 vs 3 : D1 is forfeited
- 3 vs 3 : D1 is not played

Men :

5 vs 6 : D2, S1 and S2 must be played by 4 different players if you have 5 players only
5 vs 5: D1, D2 and S2 must be played by 5 different players; penalties at 5-5 in elimination

Women, Junior and Senior :

4 vs 3: D2 and S1 must be played by 3 different players if you have 3 players only
3 vs 3: D2 and S1 must be played by 3 different players; penalties at 4-4 in elimination.

In Elimination - for Women, Junior and Senior : In case of tie 5-5, Penalty will be as follow :
4 vs 4: 5 penalties – P1 vs P1 - P2 vs P2 - P3 vs P3 - P4 vs P4 - P1 vs P1. If tie, P2 vs P2 etc...
4 vs 3: 5 penalties – P1 vs P1 - P2 vs P2 - P3 vs P3 - P4 vs P1 - P1 vs P2. If tie, P2 vs P3 etc....



NATIONAL TEAM COMPETITIONS

COIN FLIP RULES

2 matches take place at the same time:

When 2 teams meet, they have 2 tables at their disposal. The team captains flip a coin TWICE :

- 1/ the team who wins the first flip chooses the side of the table they will play on for ALL the matches against the other team; they must play on the same side on both tables.
- 2/ Each Team will get the serve on its home table. The team who wins the second flip will choose which table is played first.

IMPORTANT : Teams must not wait for their players to be available for the next match.

- If 2 matches end exactly at the same time, there is one flip to decide which table is played first.

PENALTY RULES

When a match is tied at the end of regulation games, an Overtime Shootout will take place.

- Each team will submit a roster of 5 players who will take and defend shots against players from the opponent's roster in the order they were submitted.
- Each player will take a shot on his home table against the corresponding player listed on the opponents roster (player 1vs1, 2vs2, etc).

A team receives a point when a player scores a goal. The team with the most points after 5 rounds wins the match.

If teams are still tied after the first 5 shooters, the Overtime goes into Sudden Death where players again take shots in the original order. The first team to score a goal and successfully block the opposing shooter will win the match.

• **Coin toss:** The team who wins the coin toss will choose to either shoot first or defend. The team who loses the coin toss has the remaining option. This order will continue for the subsequent rounds of the Overtime Shootout.

• **Time:** Both players have 30 seconds to begin the Overtime Shootout. Normal time limits and rules are in effect but time outs are not allowed. A time violation will be considered a blocked shot when charged to the shooter or a scored goal when delay of game is charged to the goalie.

• **Handles:** Only the forward handles (3-rod) may be changed before or after shots during the Overtime Shootout.



ACCOMMODATION

INTER HOTEL - CITY HOTEL***

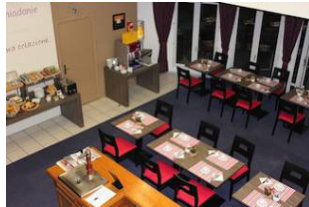
FULLY BOOKED



Click [HERE](#) to visit the website

3 rue Antonio de Hojas - 60000 BEAUVAIS - France
Tel +33 3 44 15 38 38
Distance to venue: 400m

2-persons 60,00 Euro / night
Excl. breakfast



Book Now here : reservation@cityhotel.fr

OTHERS HOTELS

Ibis Beauvais aéroport - 1 Rue Jacques Goddet, 60000 Beauvais
Click [HERE](#) for more information

Citôtel Hostellerie Saint Vincent -241 rue De Clermont, Espace Saint Germain, 60000 Beauvais
Click [HERE](#) for more information

Kyriad Beauvais Sud - 26, Rue Gay Lussac, 60000 Beauvais
Click [HERE](#) for more information

Hôtel balladins Beauvais - 26 Avenue Descartes, 60000 Beauvais
Click [HERE](#) for more information



CONTACT



✉ : **FEDERATION FRANCAISE DE FOOTBALL DE TABLE**

3 rue de Clermont
44000 Nantes
FRANCE

☎ : + 33 (0)2 40 20 52 38
@: ffft@francebabyfoot.com
💻 : www.francebabyfoot.com



✉ : **INTERNATIONAL TABLE SOCCER FEDERATION**

3 rue Clermont
44000 Nantes
FRANCE

☎ : +33 (0)2 40 47 90 84
☎ : +33 (0)2 40 20 44 59
@: info@tablesoccer.org
💻 : www.tablesoccer.org

